



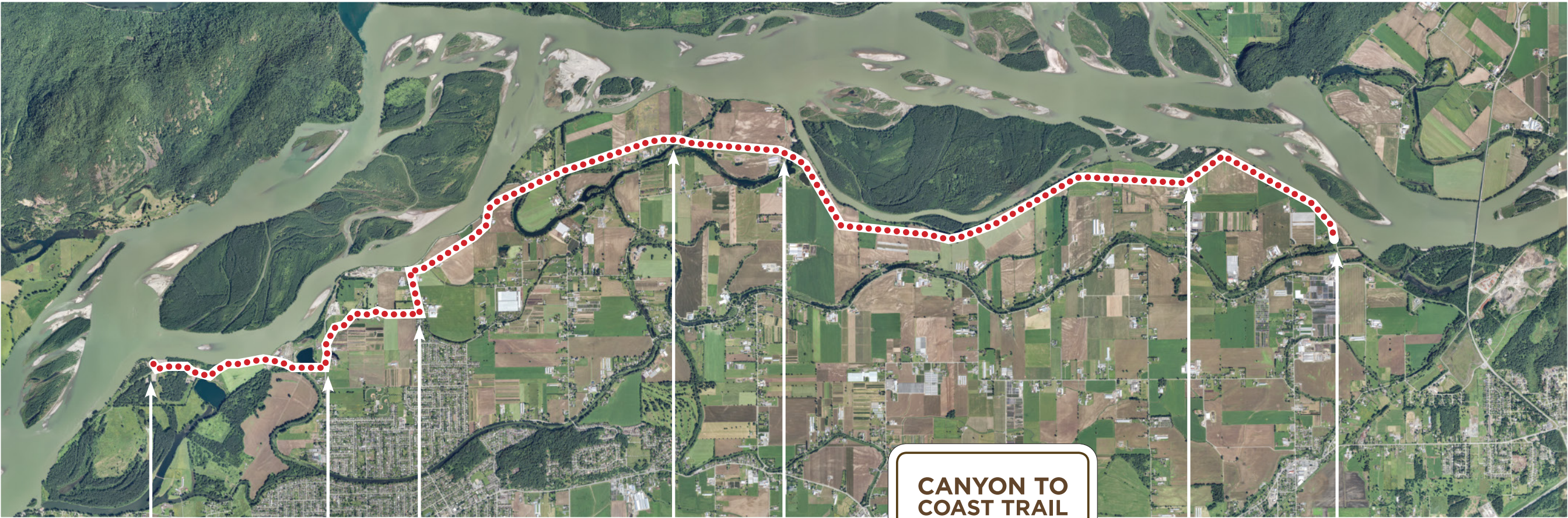
Canyon to Coast Trail: Island 22 Regional Park to Ferry Road

This 18 km of trail in Chilliwack parallels the Fraser River and connects Island 22 Regional Park to Ferry Island Provincial Park.

This route is a photographer's dream. Views to the southeast sweep across verdant farmland to the dramatic soaring Cascade Mountain range in the distance. Looking north, depending on the season, you may encounter a placid Fraser River gently rolling by

or a swift, tumultuous river sweeping everything in its path downstream. Either way, photo opportunities abound.

Less than 5 km south on Young Road from Island 22 Regional Park is Chilliwack's historic downtown. Grab a sandwich to go for an impromptu picnic, or enjoy a bite to eat in one of the many locally-owned restaurants.



Island 22
Regional Park

Young
Road

McDonald
Road

Jess
Road

Carey
Road

Gill
Road

Ferry
Road



Experience the FRASER

Experience the Fraser is a long-term project to connect communities, parks, and natural features along the Lower Fraser River from Hope to the Salish Sea. The connection is made by way of the Canyon to Coast Trail and a recreational Blueway, which creates opportunities for people to explore the natural and cultural heritage of this majestic river.

As the trail travels through many different jurisdictions, partnerships are an essential component to achieving the goal of making the Fraser River one of the world's great river destinations.

For more information, visit www.fvrd.ca/ETF

