

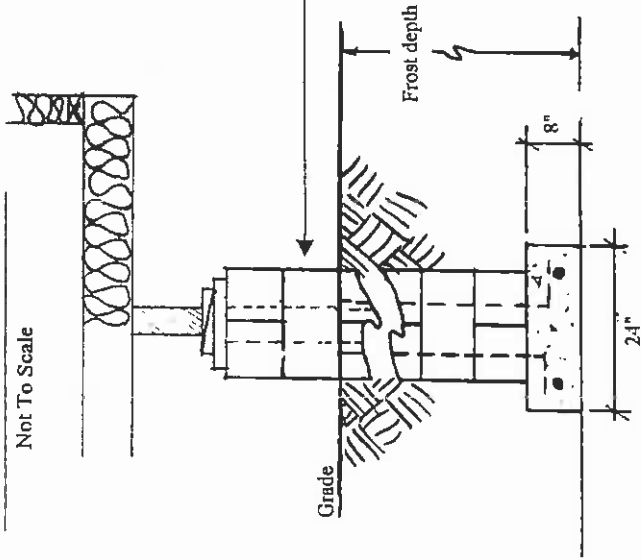
## MOBILE HOMES PLACED ON PRIVATE PROPERTY GENERAL INFORMATION

1. Homes must be certified to the CSA-Z240 "Mobile Homes" standard. Homes without certification are not permitted.
2. Landings, stairs and guardrails must be provided at ALL exterior doors in conformance with BC Building Code requirements.
  - a. Landings - must be 3'x3' minimum, have a slip-resistant surface and (if more than 24" above finished grade) have a 36" high guardrail on all open sides.
  - b. Stairs - require a maximum rise of 8", minimum run of 9", and minimum tread depth of 10". Stairs must have a slip-resistant surface. Stairs of more than three risers require a 36" high guardrail/handrail (measured vertically above the outside edge of the stair nosing) on all open sides.
  - c. Guardrails – must have no opening greater than 4" and must be non-climbable (ie. Pickets).
3. All lumber within 6" of the ground is to be pressure treated and all exposed wood must be protected from the weather (ie. paint or stain).
4. Provide four crawl space vents for cross-ventilation (preferably not in the direct path of the prevailing winter winds) and a minimum 20" x 28" access panel in the skirting.
5. Approved smoke/carbon monoxide alarms must be provided in each bedroom & in the hallway.
6. Civic address must be posted so that it is visible and legible from the road.
7. Oil Storage Tanks: filler cap and vent pipe outlets must be located at least 1.5m (5 ft) from any building opening (windows, doors etc.)
8. Concrete strip footings with poured-in-place concrete support columns at 8' on center are recommended beneath each chassis beam. Strip footings must be BELOW FROST LEVEL. (see drawings on the reverse side of this page)
9. Other foundation designs may require the services of a professional engineer.
10. Three pairs of tie downs are required for a single wide mobile home and six pairs are required for double wide mobile homes. Tie downs are to consist of ½" turnbuckle and ½" steel cable or 5/16" chain (all corrosion resistant) and are to be secured to the strip footings and to the chassis beams. (see drawings on the reverse side of this page)

Revised: May 2015

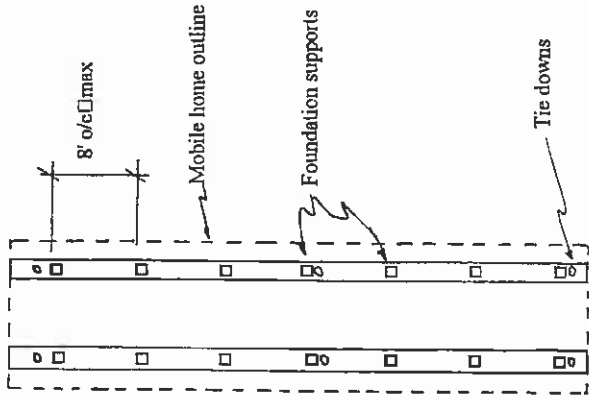
# Foundations and Anchorage on Private Property

Not To Scale

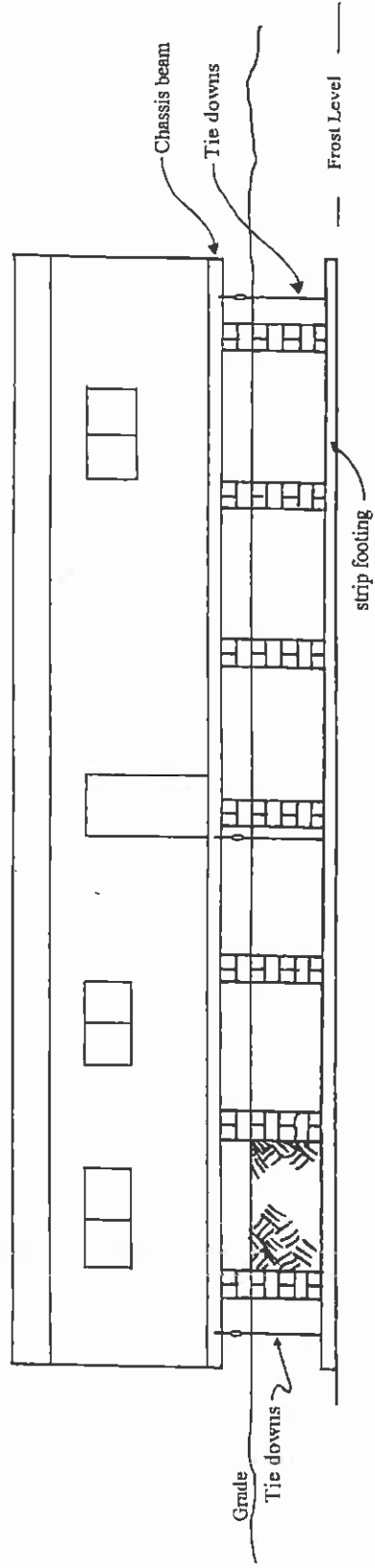


FOUNDATION DETAIL

- Chassis beam  
Shims  
Blocking as required
- 8" x 8" x 16" concrete filled block  
or  
16" diameter concrete columns,
- Foundations to extend to below frost depth  
with minimum 2 10mm reinforcing bars in columns,
- 24" x 8" continuous strip footing  
with 2 rows of 10mm rebar under each  
chassis beam



PLAN VIEW



SECTION

See other side