

EVACUATION ALERT

July 7, 2026 at 3:00pm

Instrument Number: 26-04587 - 2026-07-07(a)

Electoral Area A – Nahatlatch and North Boothroyd Area

Whereas a state of local emergency was declared on July 4, 2026, by the Fraser Valley Regional District pursuant to Section 95 of the *Emergency and Disaster Management Act* due to the Brunswick Creek (V10742) and Ainslie Creek (V10755) wildfires within the jurisdiction of the Fraser Valley Regional District; and pursuant to Section 107 (1)(c) of the *Emergency and Disaster Management Act*;

This **Evacuation Alert** has been issued by the Fraser Valley Regional District due to immediate danger to life safety caused by Wildfire. This Evacuation Alert is effective as of July 7, 2026, at 3:00pm and is in effect for the following areas:

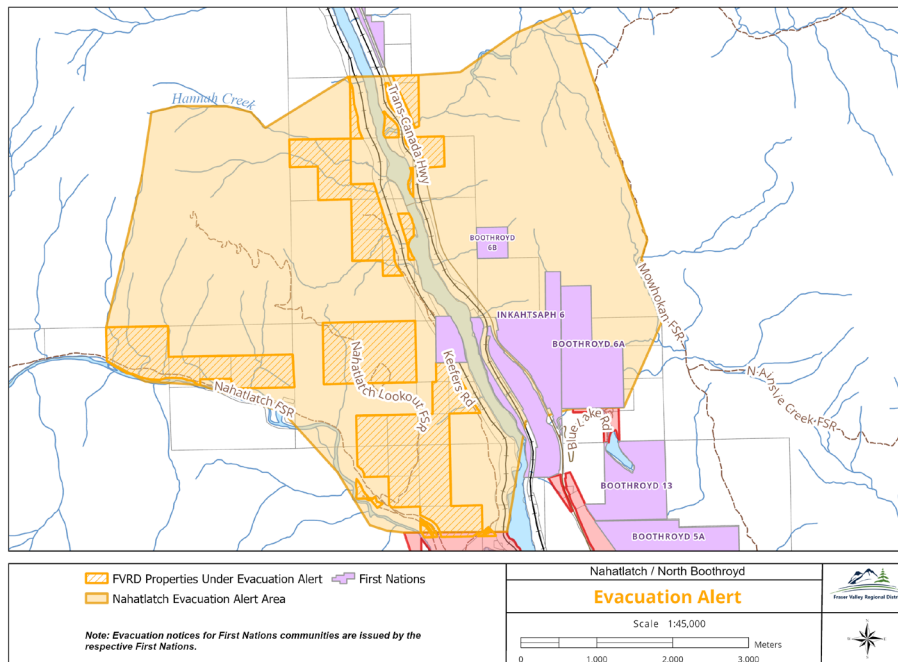
Civic Addresses

- 54370 KEEFERS RD
- 55601 KEEFERS RD
- 55603 KEEFERS RD
- 56201 KEEFERS RD
- 56301 KEEFERS RD
- 56402 KEEFERS RD
- 56601 KEEFERS RD
- 61755 NAHATLATCH FSR

Unaddressed Properties (PIDs)

- | | | |
|---------------|---------------|---------------|
| • 011-281-081 | • 015-216-179 | • 004-769-694 |
| • 011-285-478 | • 015-236-633 | • 011-287-438 |
| • 011-287-314 | • 011-292-148 | • 011-292-059 |
| • 011-286-717 | • 011-292-091 | • 003-781-488 |
| • 011-281-014 | • 004-769-716 | • 003-782-280 |
| • 015-216-225 | • 011-292-032 | • 015-216-357 |
| • 015-215-989 | • 011-292-067 | • 015-216-314 |
| • 015-216-195 | • 004-769-686 | • 003-782-263 |
| • 015-216-128 | • 004-769-724 | • 015-216-349 |
| • 015-216-012 | • 011-292-016 | • 015-216-683 |

This Evacuation Alert applies only to lands within Fraser Valley Regional District Electoral Areas. Evacuation notices for First Nations communities are issued by the respective First Nations.



WHAT YOU SHOULD DO:

1. Locate all family members and choose a meeting place outside the evacuation alert area in case you're separated when an Evacuation Order is issued.
2. Pack essential items, including:
 - Government-issued ID,
 - Medications and prescriptions, eyeglasses & hearing aids
 - Important documents (insurance, credit, mortgage/tenancy)
 - Care needs for children, pets, and dependents
 - If space and time allow: keepsakes and comfort items
3. Make plans for those needing help:
 - Prepare to evacuate persons with disabilities (bring mobility aids/supports)
 - Account for seniors, children, and neighbours needing assistance
 - Understand your insurance coverage & review your home or tenant insurance for evacuation-related expenses
4. Plan for animals:
 - Take pets with you: have carriers, leashes, food, and vet records ready
 - Move livestock to a safe location if possible
5. Arrange transportation for everyone in your household:
 - Fill the gas tanks of vehicles
 - If you need evacuation transportation, pre-arrange with neighbours, friends and family.
6. Plan where you will stay:
 - Make arrangements with family or friends
 - Accommodations may be limited to cots in comingled shelters during emergencies.
7. If you'll need public aid assistance with lodging, food, or essentials after evacuation:
 - Ensure you have a BCeID digital app ID set up
 - Then set up or update your BC Emergency Support Services (ESS) profile now at ess.gov.bc.ca to receive the independent sheltering support funds from the province
8. Follow instructions from emergency officials and be prepared to leave immediately if an Evacuation Order is issued.



Tarina Colledge
Emergency Operations Centre Director