

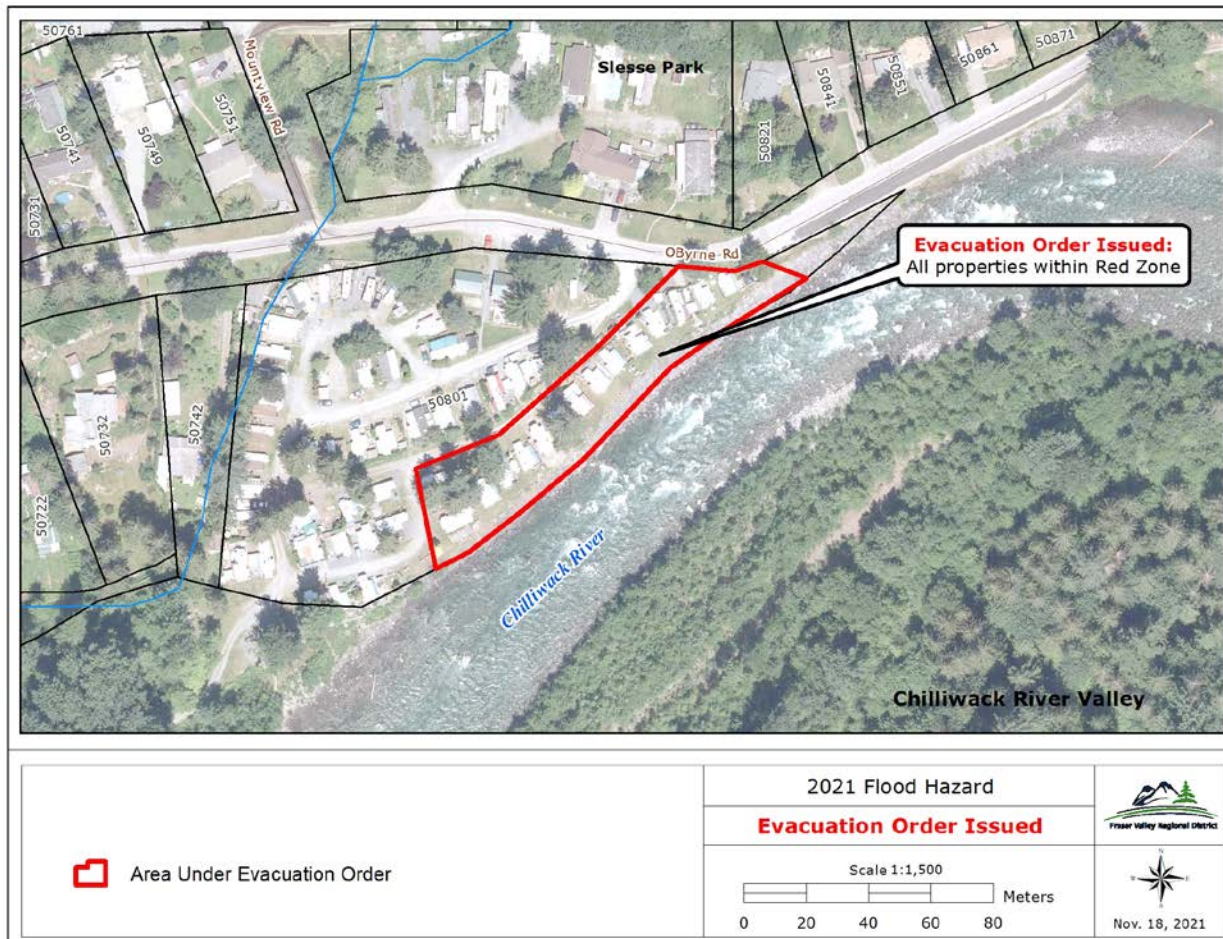
EVACUATION ORDER

November 18, 2021 at 4:05 pm

Chilliwack River Valley, FVRD Electoral Area E

Pursuant to the BC Emergency Program Act, an **Evacuation Order** has been issued by the Fraser Valley Regional District (FVRD) due to immediate danger to life safety and health because of the atmospheric river event and heavy rainfall causing overland flooding and mudslides.

This ORDER applies to the highlighted trailers at 50801 OByrne Road in FVRD Area E as shown in the red on the map:



WHAT YOU NEED TO DO NOW

You must leave the evacuation area immediately.

- » Be ready with 72 hour emergency supply
- » Close all windows and doors
- » Shut off gas and electrical appliances. Leave your refrigerators and freezers on
- » Close gates and latch but do not lock
- » Gather your family; assist a neighbour or someone else who needs help
- » Take critical items if they are immediately available (medicine, ID, cash/cards, keys)
- » Take pets in kennels or on leashes. (Keep tropical pets in their cages and containers)
- » Do not use more vehicles than you have to.
- » Do not use the telephone unless you need emergency service (text family and friends or post on your social media)
- » Register with Emergency Support Services (ESS) to report that you have safely left the area
- » Tune in to local radio stations

IF YOU CANNOT SELF-TRANSPORT AND ALL NEIGHBOURS HAVE LEFT THE AREA IMMEDIATELY CALL:

FVRD Emergency Operations Centre: 778-704-0400 or 911

Evacuee Support Services (ESS):

- » Chilliwack Landing Sports Centre
45530 Spadina Chilliwack, BC, V2P 1V3
Please register at the ESS Centre.
- » Self-register with Emergency Support Services (ESS) at ess.gov.bc.ca to report that you have safely left the area. By registering, you will be eligible for emergency shelter and food if you have not made other arrangements.

Further information will be issued as it becomes available. Please visit fvrd.ca/EOC or follow us on Facebook and Twitter (@FraserValleyRD) for updates.



Chair Jason Lum
Fraser Valley Regional District